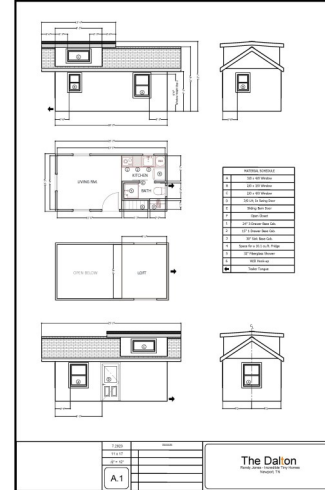


The Dalton 10' x 20' Tiny Home



- LP Siding ([See color options](#))
- Metal Roofing ([See color options](#))
- 36" Exterior Door
- Insulation – Close Cell Polyurethane Spray Foam
- Double Dormer
- Stairs
- Ample Electric Outlets & Switches throughout the Home
- Farm Style Sink W/ Faucet
- Full-Size Kitchen Cabinets
- Kitchen Cabinets 30", 15', 24'
- Cook Top
- Range Hood
- 26" area for Refrigerator
- Washer / Dryer Hook-up
- Vinyl Flooring ([See color options](#))
- White Painted Walls (Interior)
- Natural Wood Ceiling & Trim – Polyurethane
- Ceiling Fan
- Dimmable LED Lights
- Sliding Barn Style Bathroom door
- Standard Residential Elongated Toilet
- Air Exchanger
- 9000 BTU 110v Mini Split
- Exterior Water Spigot (1)
- Exterior Outlets (3)
- Exterior Lights (3)
- Wood Window Awnings
- ANSI Certification (For Homes 8ft 7in and larger)

Window Notes

- Vinyl Single Hung White Windows
- A -2.0 / 3.0 with screens
- B -3.0 / 4.0 with screens
- C – 5.0 x 4.0 Picture Window
- Egress window Exterior



\$72,900.00

Price, design and availability subject to change without notice

Phone: 423-438-0111
E-mail: sales@incredibletinyhomes.com
850 Industrial Rd.
Newport, TN 37821

