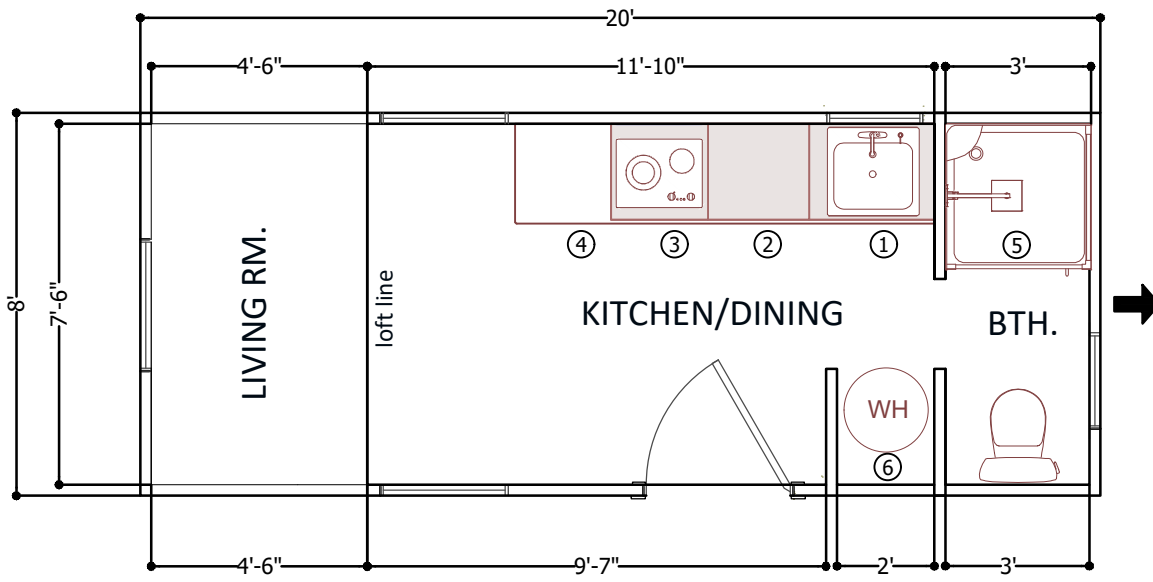
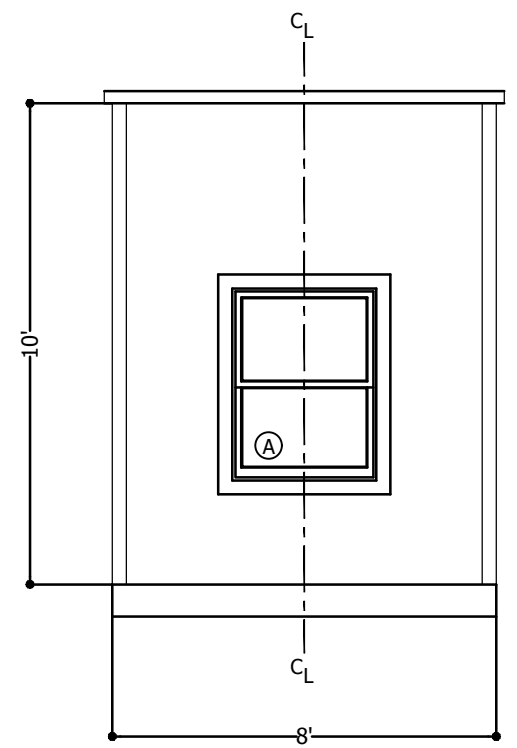
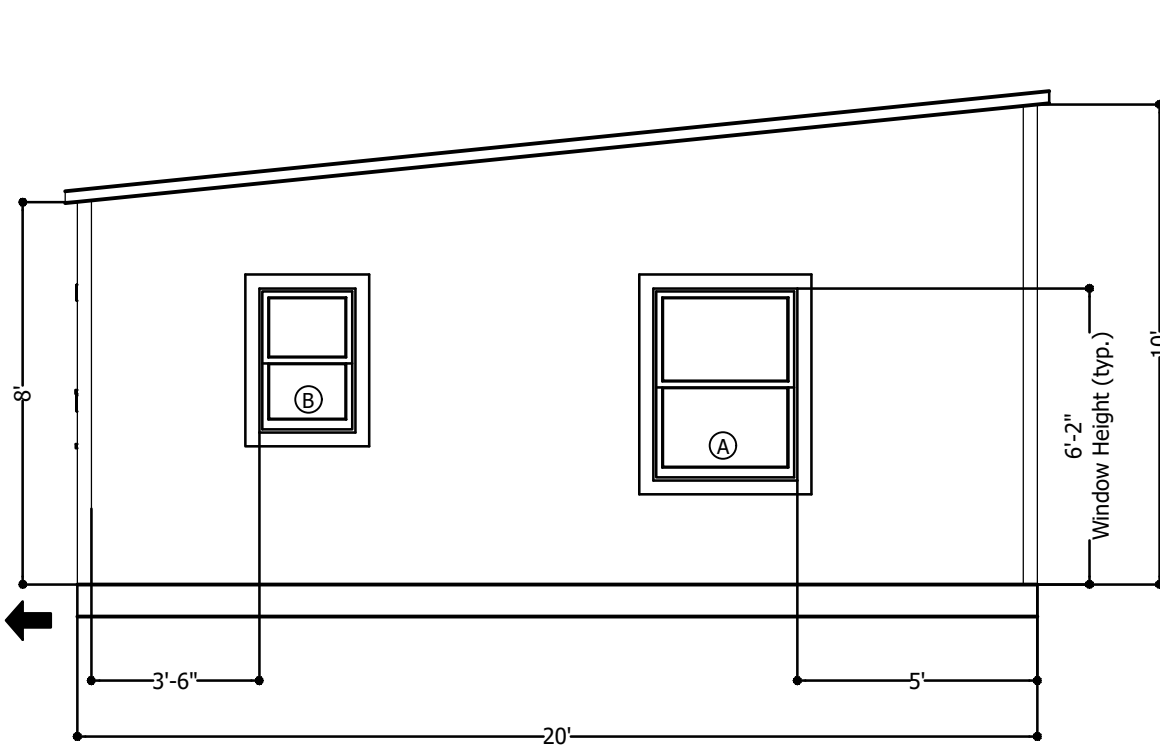


Placement of Window A above is NOT shown in actual placement. It will be located approx 18" from end of Incred-I-Box

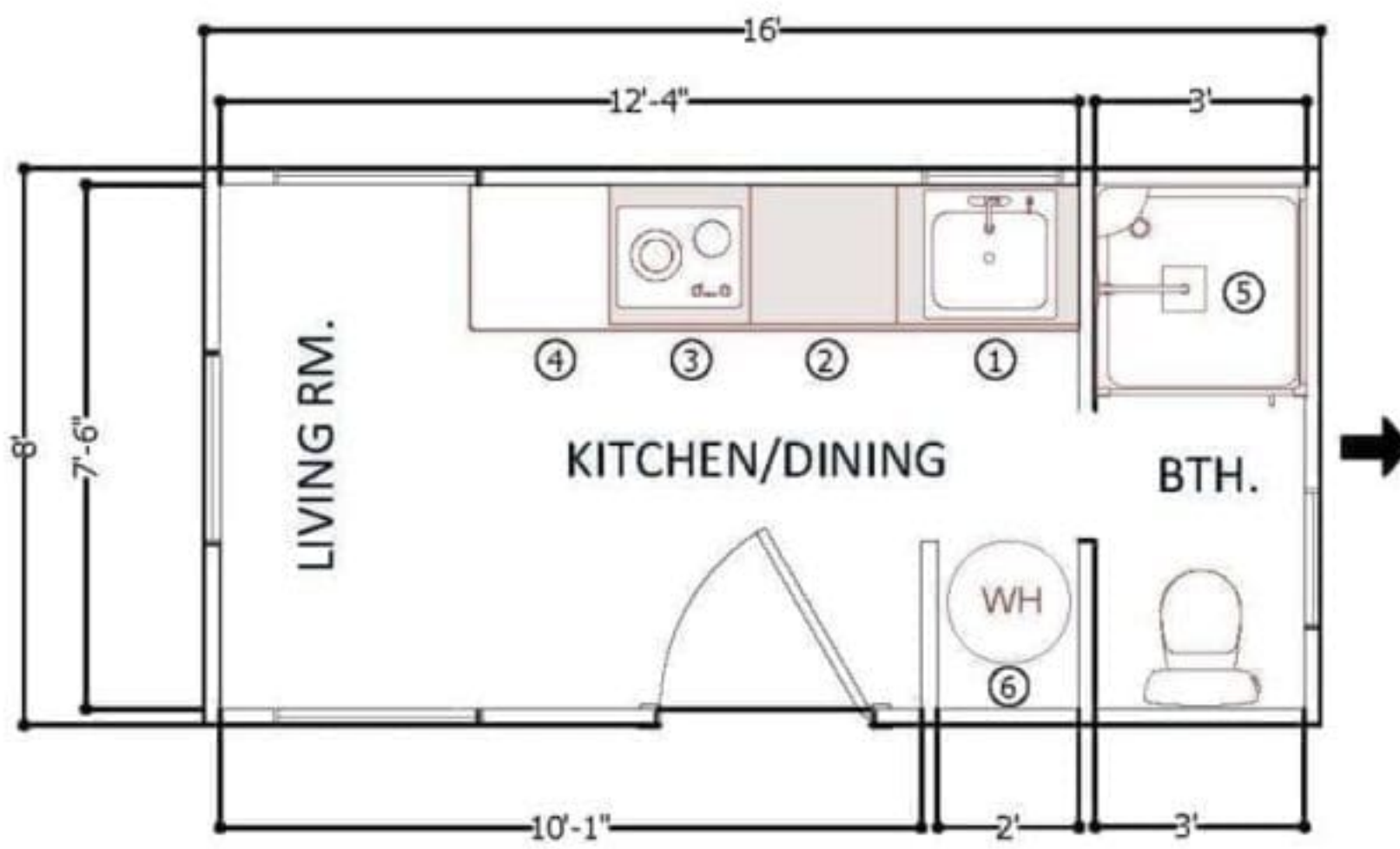
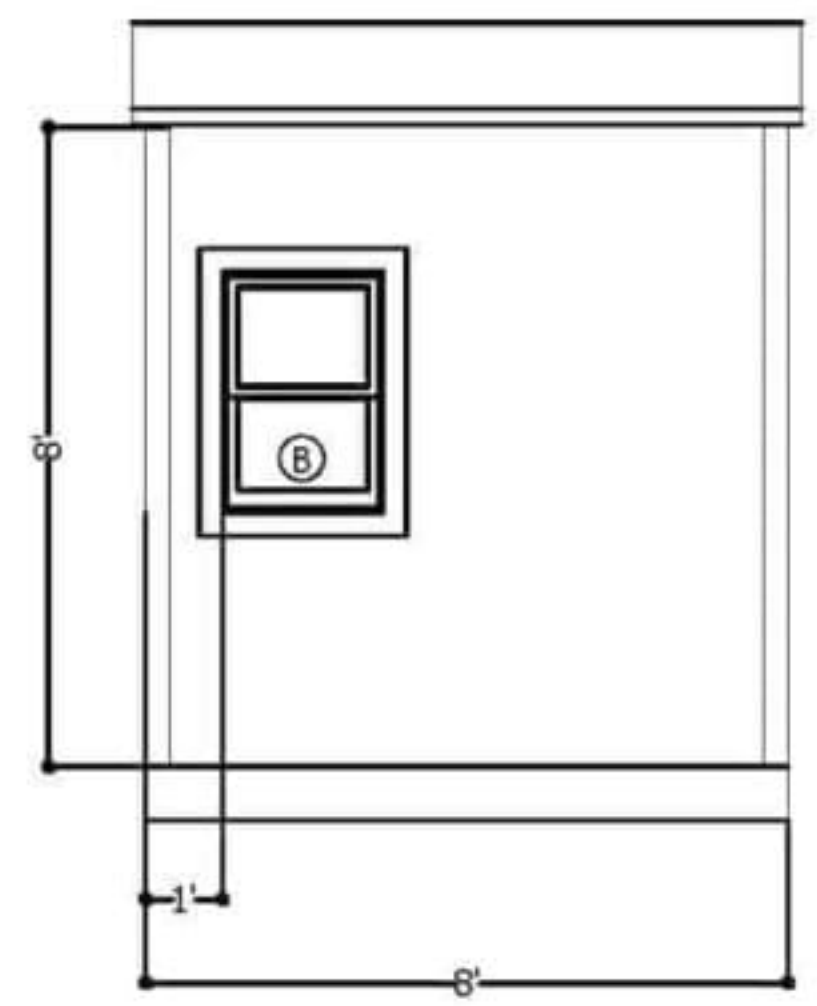
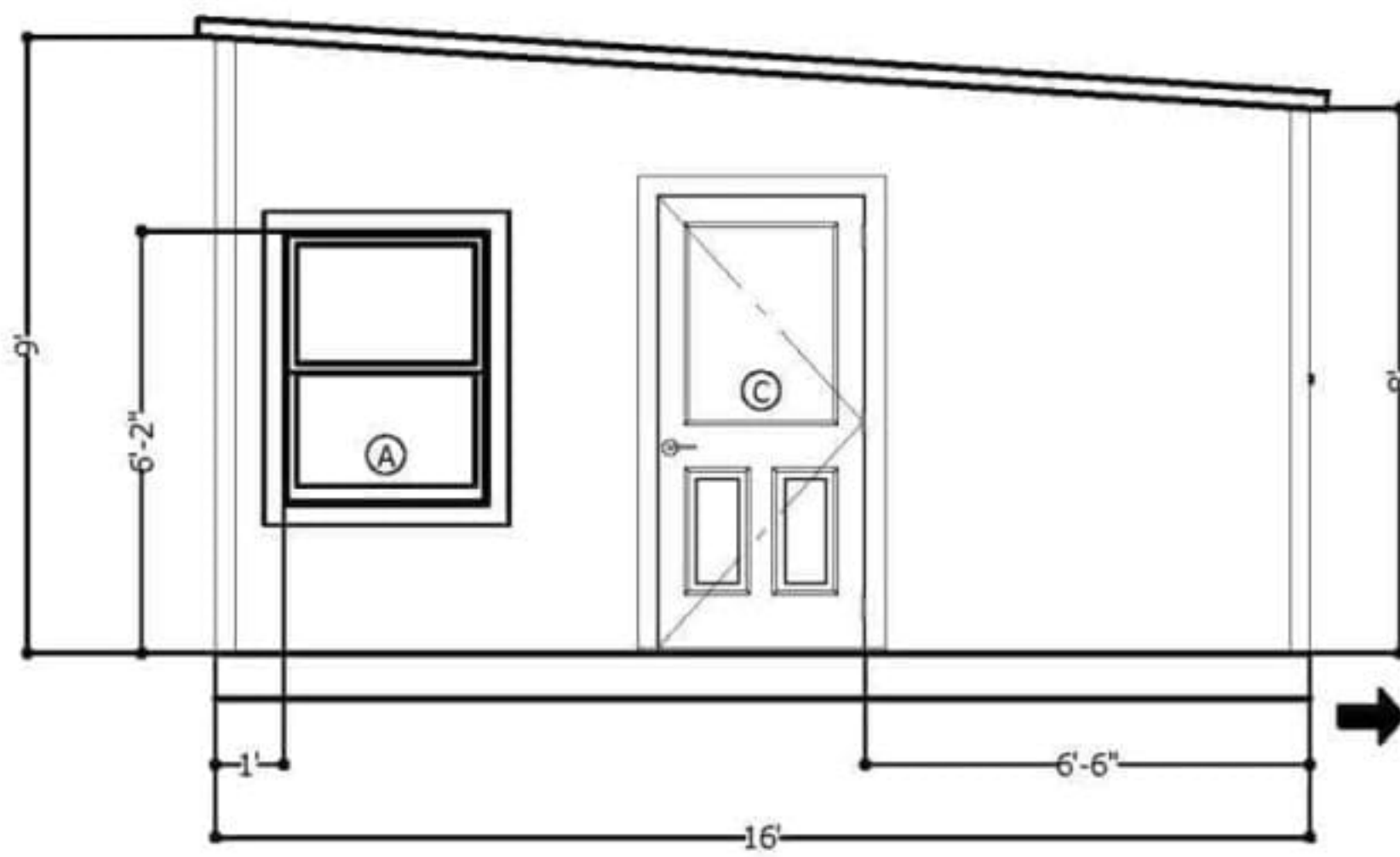


MATERIAL SCHEDULE	
A	3/0 x 4/0 Window
B	2/0 x 3/0 Window
C	36" RH; 1/2 Glass Door
1	30" Sink Base Cab.
2	24" 3-Drawer Base Cab.
3	24" 1-Drawer Base Cab.
4	Flip-up Countertop
5	36" Fiberglass Shower
6	W/D Hookup
➔	Trailer Tongue

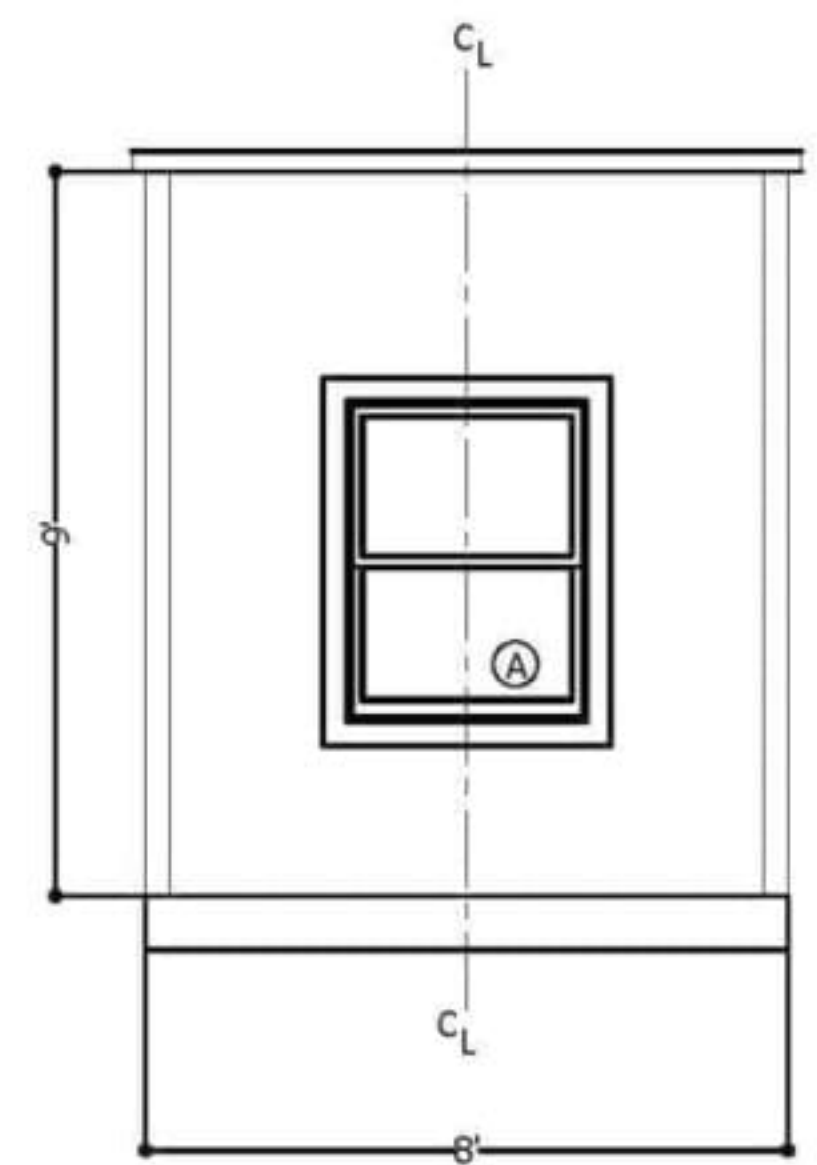
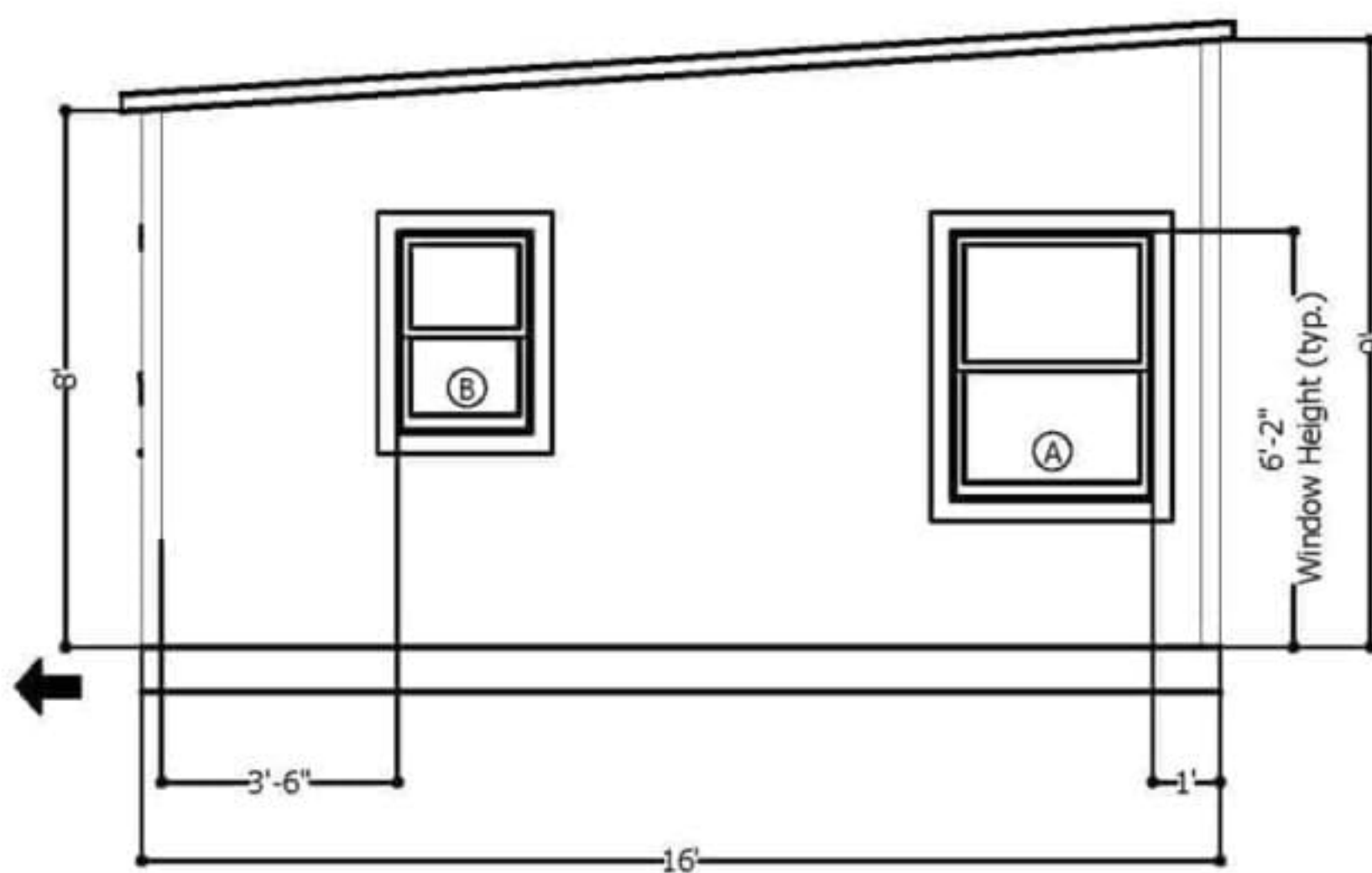


7.2023	REVISIONS
11 x 17	
No Scale	
A.2	

The Incred*i*Box
 Randy Jones - Incredible Tiny Homes
 Newport, TN



MATERIAL SCHEDULE	
A	3/0 x 4/0 Window
B	2/0 x 3/0 Window
C	36" RH; 1/2 Glass Door
1	30" Sink Base Cab.
2	24" 3-Drawer Base Cab.
3	24" 1-Drawer Base Cab.
4	Flip-up Countertop
5	36" Fiberglass Shower
6	W/D Hook-up
➔	Trailer Tongue



REVISIONS	
7.2023	
11 x 17	
No Scale	
A.1	

The Incred*i*Box
 Randy Jones - Incredible Tiny Homes
 Newport, TN